



MEMORANDUM #3

Date: September 15, 2019

Project #: 23256

To: Project Management Team & Advisory Committee

From: Matt Kittelson, Miranda Barrus, and Julia Kuhn

Project: Wickiup Junction Refinement Plan

Subject: Goals, Objectives, and Evaluation Criteria

INTRODUCTION

This memorandum describes the draft goals, objectives, and evaluation criteria for the Wickiup Junction Refinement Plan. This memorandum also provides background information, a map of the project area, pertinent goals defined in local, regional, and state plans and policies, and specific evaluation metrics that will be used throughout the refinement planning process. This memorandum establishes a project framework for making project recommendations in coordination with the public, Advisory Committee, and Project Management Team (PMT).

PROJECT BACKGROUND

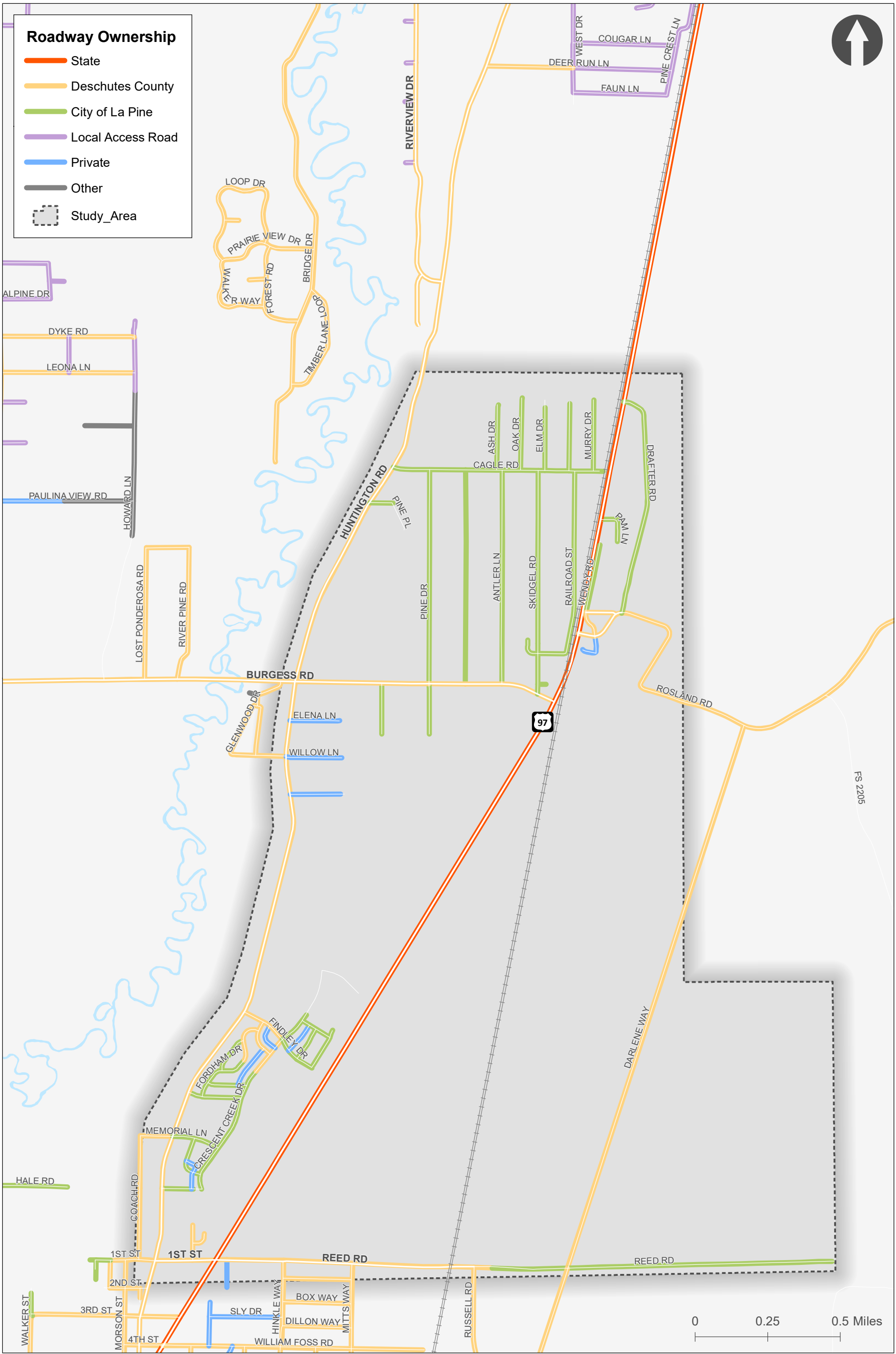
- ▶ As the La Pine community has grown farther to the north and traffic volumes on US 97 have continued to increase, the highway has increasingly been a barrier to community cohesion. The City, Deschutes County, and the Oregon Department of Transportation (ODOT) have engaged in the Wickiup Junction Refinement Plan to help identify transportation improvements, both along the highway as well as along the local street system to better serve both city residents and businesses as well as regional traffic within the community.
- ▶ Community Safety and Health: How can people be enabled to safely and comfortably drive, walk, run, or cycle in and through the community, including along and across US 97?

Figure 1 illustrates the study area for the Wickiup Junction Refinement Plan.

This project will identify potential short- (0-5 years), mid- (6-10 years), and long-term (11-20 years) projects to enhance the transportation system for people riding bicycles, walking, taking transit, driving, and freight movements. This plan builds upon prior work completed in the 2013 La Pine Transportation System Plan (TSP).

Some of the key aspects of this refinement planning effort include:

- ▶ Highway Mobility: How can the needs of through traffic on US 97 be balanced with continued economic development in La Pine? What improvements are needed to ensure safe and efficient crossings of the Burlington Northern Santa Fe (BNSF) rail line via US 97?
- ▶ Local Circulation: How do local residents and businesses access to, from, and across US 97? What improvements are needed to ensure safe and efficient crossings of the BNSF rail line by City streets and County roads (e.g. Reed Rd, Pinecrest Ln)
- ▶ Multi-Modal Travel: What are the needs for people walking, biking, or taking transit travel within and through the Wickiup area?
- ▶ Gateway Transitions: What are appropriate treatments to transition vehicular travel speeds from the north into the community of La Pine?
- ▶ Community Safety and Health: How can people be enabled to safely and comfortably drive, walk, run, or cycle in and through the community, including along and across US 97?



DRAFT EVALUATION CRITERIA

Evaluation metrics are a helpful means of ensuring that the plan is in line with the City of La Pine, Deschutes County, and ODOT's vision. To ensure a consistent understanding of the evaluation metrics used in this memorandum, definitions are provided below:

- ▶ Goals are intended to be broad statements that reflect the community's desires and vision for the transportation system. The goals are inherently aspirational and may not be fully attained within the 20-year horizon of the plan. The goals are supported by the objectives.
- ▶ Objectives are intended to provide a way for the community to measure progress toward meeting the goals.
- ▶ Evaluation criteria provide a quantitative or qualitative tool to assess progress towards the established objectives.

The evaluation criteria will be used throughout the TRP for two key purposes:

1. Evaluating the existing and future transportation system and identifying areas for improvement; and,
2. Comparing and selecting preferred elements to be included in the Wickiup Junction Refinement Plan.

The following method will be used to rate each evaluation criterion against each alternative.

- ▶ The concept addresses the criterion and/or makes substantial improvements in the criteria category. (●)
- ▶ The concept partially addresses the criterion and/or makes some improvements in the criteria category. (◐)
- ▶ The concept does not support the intent of and/or negatively impacts the criteria category. (○)
- ▶ The criterion does not apply to the concept or the concept has no influences on the criteria. (⊗)

Draft Goals, Objectives, and Evaluation Criteria are provided in Table 1.

EVALUATION MATRIX

The following matrix will evaluate the evaluate alternatives developed for the Wickiup Junction area in relation to the goals, objectives, and evaluation criteria described previously in order to make project recommendations.

Table 1: Goals, Objectives, & Evaluation Criteria

Goal	Objective	Evaluation Criteria
<p>Community & Livability: Balance east-west connectivity with US 97 mobility needs to match local community context and priorities.</p>	<ul style="list-style-type: none"> ▶ Provide a transportation network that accommodates local, commuter, and all types of travel along US 97. ▶ Link regional and local routes to key attractors on US 97, such as the existing businesses within Wickiup Junction, residential areas, and other community destinations. ▶ Increase transportation options on US 97 by improving bicycle, pedestrian, and transit facilities, routes, crossings, and connections. ▶ Minimize impacts to existing neighborhoods, businesses, and developable parcels. ▶ Improve off-highway routes such as bike paths, sidewalks, multi-use paths, etc. to provide alternate routes between La Pine and Wickiup Junction 	<ul style="list-style-type: none"> ▶ Does the proposed project element serve people that live in, work in, and/or visit Wickiup Junction? ▶ Are there any significant barriers to or impacts that would result from the proposed project element, such as the presence of significant natural resources or require acquisition of property contaminated by hazardous material? ▶ Do the proposed project elements increase noise impacts to the neighbors or impact parks, schools or churches? ▶ What are the right-of-way impacts of the proposed project element - # of businesses relocated, #of residential properties impacted, impacts to public facilities, etc.
<p>Mobility: Provide a safe and efficient transportation system for all modes of travel.</p>	<ul style="list-style-type: none"> ▶ Meet ODOT mobility targets along US 97 through the horizon year. ▶ Maintain the carrying and dimensional capacity for statewide freight movement on US 97; maintain US 97 as a critical freight route. ▶ Provide safe and efficient emergency vehicle access to and from US 97. ▶ Provide safe multimodal access within Wickiup Junction ▶ Improve key intersections in Wickiup Junction to enhance safety and mobility of City and County streets, as well as for people turning on or off US 97. ▶ Reduce reliance on US 97 for local travel. 	<ul style="list-style-type: none"> ▶ Does the proposed project element meet mobility targets on US97 through 2040? ▶ Does the proposed project element represent an investment that works toward the long-term solution for the corridor? ▶ Does the proposed project element maintain or enhance the carrying and dimensional capacity for statewide freight movement? ▶ Does the proposed project element enhance east-west multimodal connectivity within the community?
<p>Safety and Health: Enable people to safely and comfortably drive, walk, run or cycle in and through the community, including along and across US 97, for all types of trips.</p>	<ul style="list-style-type: none"> ▶ Address safety, comfort, and security of people driving, walking, and biking along and across US 97, Burgess Road, and the BNSF railroad at-grade crossing. ▶ Use transitional and traffic calming techniques to slow traffic to posted speeds. ▶ Maintain environmental, natural, and wildlife resources and where to consider green spaces. 	<ul style="list-style-type: none"> ▶ Does the proposed project element address an area with a crash history or risk factor? Is it expected to improve safety or slow speeds? ▶ Does the proposed project element reduce the level of stress experienced by people walking and/or biking?
<p>Accessibility: Provide infrastructure that supports accessible transportation options for all users.</p>	<ul style="list-style-type: none"> ▶ Provide well-designed, visible, safe, and convenient infrastructure and crossings for all users regardless of age, ability, or mode of transportation. ▶ Provide a connected transportation system for all modes of travel within the study area. 	<ul style="list-style-type: none"> ▶ Does the proposed project element address existing gap or deficiency in the vehicular, transit, bicycle and/or pedestrian network? ▶ Are the proposed multi-modal facilities comfortable and convenient for users of all ages and abilities?
<p>Economic Vitality: Support existing and future businesses along US 97 through La Pine.</p>	<ul style="list-style-type: none"> ▶ Provide connections to businesses within Wickiup Junction. ▶ Improve or maintain City streets and County roads that provide parallel routes that can be used as detours when a crash closes US 97 (e.g. Huntington Road and Darlene Way) 	<ul style="list-style-type: none"> ▶ Does the proposed project element address mobility and serviceability for local and regional freight activity? ▶ Does the proposed project element support business activity within Wickiup Junction? ▶ Does the proposed project element improve pedestrian and/or bicycle access to businesses within Wickiup Junction??